

VILLA PALMS

APARTMENT HOMES

51 Murdell Lane

Livermore, CA 94550

p: 925.443.4544 | f: 925.443.4548

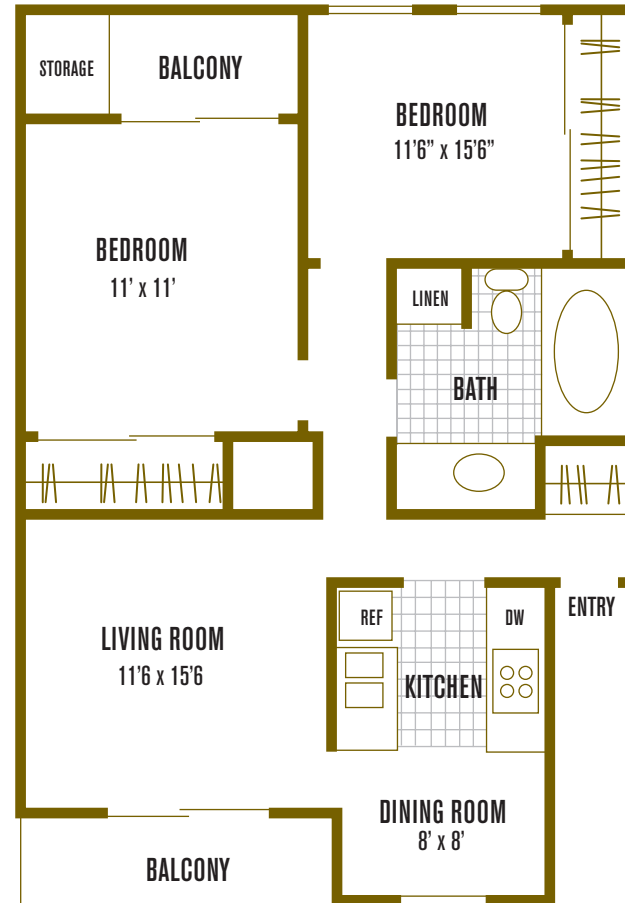
www.ExperienceVillaPalms.com

Neutral walls and plush carpeting are bathed in an abundance of natural lighting from the oversized windows. They create the perfect framework for an inviting home.

Special features include dual patios or balconies, generous cabinetry and storage space, as well as name-brand appliances.

residence 2

2 Bedrooms | 1 Bath | 800 sq. ft.



notes: _____

All room dimensions and square footages are approximate.

